

**birkdale**   
Driven by Quality Dedicated to You

**INSULATED SECTIONAL**  
GARAGE DOORS



we design  
we manufacture  
we install

**NATIONWIDE**  
SALES & INSTALLATIONS

0800 118 5678

**British Owned** Manufacturing Company



# why choose a sectional door?

Here at Birkdale our core values to all our doors we manufacture is to design, produce and deliver to completion our industry leading doors.

All Birkdale doors emphasise **safety, reliability and durability** and are backed by clear and confident warranties.

Our automation systems are fully tested and backed by **TUV certification** as a minimum.

Functionality, **high grade materials** and latest design and production technologies ensures a Birkdale door will give the finish and longevity expected of our **UK manufactured** composite sectional doors.



## SPACESAVING

The design and operation of the sectional door allows users to extract the full use of the exterior driveway leading to your door.

No need to worry about whether you have left enough space to open your door.

The sectional door will rise and retract without protruding outwards.

**Wherever possible** we will fit behind the reveals giving you the benefit of **maximum width** when using our sectional door.



## NO SPACENO PROBLEM

Whenever we can't fit behind the reveals we will use a **substantial** outer framework.

This can be colour coded to your door or if desired a contrasting colour to allow your door to stand out further.

## FULLY INSULATED ENVIRONMENTALLY FRIENDLY

The minimum thickness of a Birkdale double-skinned sectional panel is **40mm**, giving **superb thermal and insulation qualities**.

With a **fire rated foam core** and **superior build-quality**, Birkdale sectional doors are very strong and secure, providing **outstanding security** characteristics.

For that extra level of insulation, consider our **full door seal system**, ensuring drafts and water ingress is something that you don't have to worry about.







# engineered to last...

All our residential sectional doors come as standard with **twin roller systems**, ensuring smooth and quiet operation when opening and closing your door. Each wheel is **bearing mounted** for longevity and connected to the hinge bracket with a **solid steel** shaft.

The steel used to fabricate our vertical and horizontal track systems is **20% thicker** than most of our competitors, ensuring no twisting motions can be applied upon installation.

Framework materials are **galvanised coated** steel giving years of trouble free life.

Cables are again a **twin style** for added safety and are manufactured with **zinc plated steel and polypropylene** central core, allowing our cable sets to constantly keep their shape and profile.

All the innovative features in our sectional door coupled together have created a door that has been engineered with longevity and performance as its core value.



SPACE SAVING



LOW MAINTENANCE



SAFE & SECURE



FINGER-SAFE PANELS

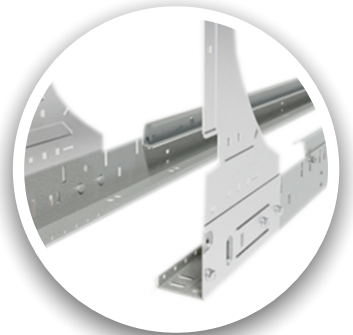


INSULATED

## SAFETY AS STANDARD ANTI-TRAP FINGER GUARD

All our residential doors come with an **anti-trap**, built-in finger guard **as standard**.

The automation systems we supply are all equipped with **leading edge detection** so in the event of your door closing on an item or person the system will detect this and the door will retract.





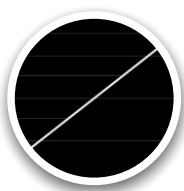
# ESSENTIAL COLLECTION

ageless, distinctive & modern  
complement your property...

The Birkdale Essential collection offers our discerning customers the **quality assured** with every one of our doors in a colour scheme deemed as **cost competitive**.

With the **three most popular colours** of pure white, anthracite grey and jet black, that are available in a full flat panel or the mid ribbed design. Birkdale offer this range in smooth, embossed woodgrain or flat woodgrain finish, **all at the same price**.

Complimented with our **quietest operator** and backed by our **full warranty** programme, this range of door will stand out for years to come and create a stunning kerb appeal.



**Jet Black**



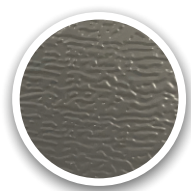
**Anthracite Grey**



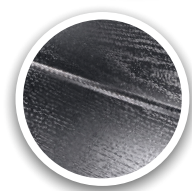
**Pure White**



**Smooth**



**Embossed Wood Grain**



**Flat Wood Grain**

## CHOOSE FROM OUR ESSENTIAL RANGE







# NATURESCOLLECTION

the natural beauty of timber  
without the maintenance...

Available in **TWO DESIGNS** and **THREE DISTINCTIVE FINISHES**

All our wood effect doors are available in the **L-RIBBED** or the **MID RIBBED** panels designs.

Our detailed finish gives the direct appearance of a **classic wood finish**, but with the stability, thermal values and longevity of our engineered panels.

The door appearance will be the **same for years to come** and will not suffer the factors that a natural wood can give.



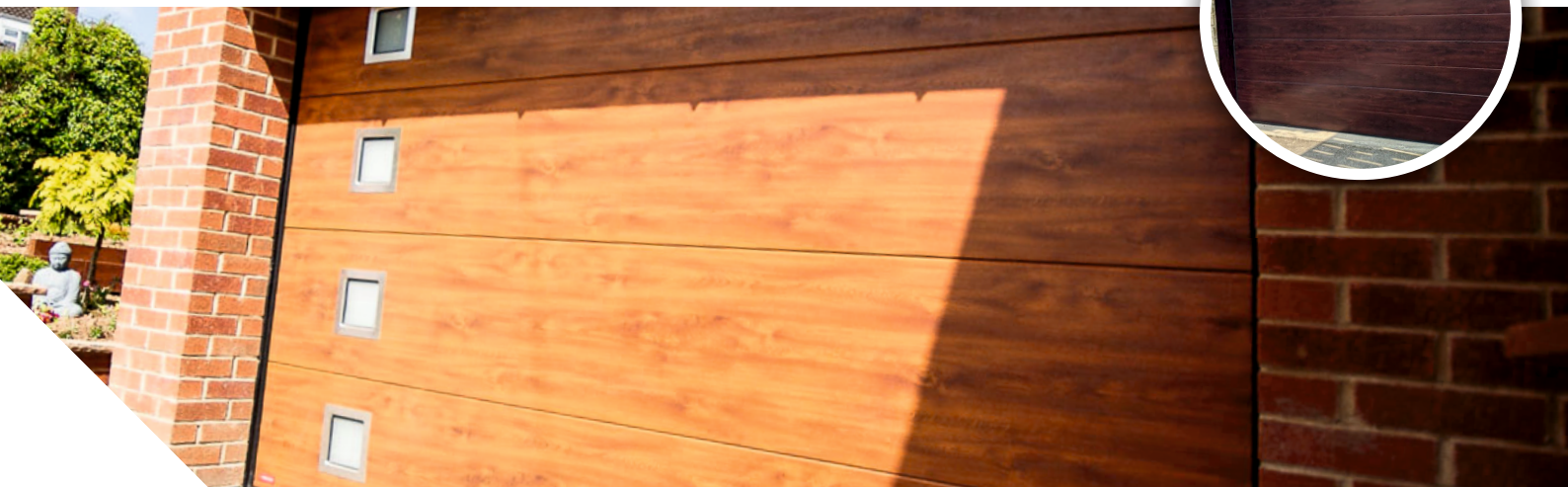
**Irish Oak**



**Golden Oak**



**Mahogany**





# whatever colour he can imagine... we can manufacture!



## LUXURYCOLLECTION

bespoke manufacturing  
just for you...

Colours are the visual accents and reflect the overall design of the property, the addition of a Birkdale composite sectional door can only enhance and change the whole kerb appeal of your home.

Along with the standard range, Birkdale can offer **100's of choices** due to our computerised self-coating department.

Industry leading **warranties** on colour fading of up to **7 years**.

Birkdale's sectional door ranges are a **made to measure** individual product. They are manufactured to exact sizes in both width and height.

Our insulated **40mm panels** perform one of the best **U value** results on the market, ensuring you gain the weather protection deserving of your new garage door.

Choices in texture, styles and finishes ensure we at Birkdale, have

a solution for your composite sectional door.

With options on our **triple glazed windows**, endless **colour choices** and the peace of mind that we are a **UK manufacturing company**.







## WICKETDOORS

Birkdale understand that lifestyles are different for every person and as such some people have the requirement to have a **wicket or entrance door** installed within their sectional door.

The framework is of **Aluminium construction** and pleasantly blends in within your door construction.

Our wicket doors are **designed with safety in mind** so that should this door be open then the operator cannot open the sectional door, ensuring protection and no damage is caused to any part of the door.

Wicket doors are **supplied with handle and barrel lock as standard.**



## DOOR IN A DOOR EASY ACCESS WHEN YOU NEED IT

With today's modern lifestyles, **garages are used for anything but a car**, they have evolved and become storage spaces, workshops, home gyms or even a playroom for the kids.

Birkdale's range of wicket doors allow **easy access** that is very **convenient**, whilst ensuring the whole contents of the garage are not on view every time the main door is opened.

The **versatile design** means you can have to door in **virtually any position**, allowing you to choose the ideal location for your requirements.







# PANORAMIC DOORS

modern & clean  
second to none...

The **Birkdale Panoramic** door is a true engineered door, made using the latest **CNC** procedures and assembled with care and attention to every detail. Only **fully approved materials** are used in our Panoramic doors so the customer has every confidence they have door built with care and attention and will give them longevity and **stunning looks** for years to come.

For the **ultra-modern look**, the Birkdale TL panoramic range offers endless variations.

When better lighting and transparency is required to compliment the kerb appeal of our **aluminium framed** then our PS style of sectional door is the perfect combination. The **maintenance-friendly aluminium frame** can be fitted with various types of filling and glazing and therefore offers all the freedom to create a personal design.

Various versions of the following types of filling and glazing are available, including Acrylate, Pro-Tec, Diamond Mesh, Twin Wall sheet, Perforated sheet and blank filling.

**Privacy glazed option** for external viewing but externally the contents of the garage are kept discreet.

Frameworks can be **powder coated** to customer requirements to give a stunning finish and look. All our panoramic sectional doors come **complete with our Birkdale electric operator** and are designed and engineered to exact measurements.







## DXLSIDE HINGED



exciting alternative to the norm  
endless design options...

The **Deluxe line** twin has the appearance of a traditional wooden side hinged door but without the associated disadvantages. All our **DXL** side hinged doors are made from an **aluminium profile** that benefits the designs and usage we expect of our premium offerings.

With **unlimited colour choices and finishes**, choice of handles, locks and window variations we have every option available to aid in designing your side hinged door.

Our **fully sealed 40mm in-fill** ensures optimum insulation to keep out the cold.

The **17mm sill** fits seamlessly and contributes to reducing the penetration of water and air.

The Deluxe line twin can be designed to make your life easier, you determine which side is the leading or whether you desire one door leaf to be wider than the other.

For **added security** our doors come as standard with **cylinder lock and handles** as an upgrade option we offer a multi point lock and thumb turn, of doors.



## SINGLE ACCESS DOORS A MATCH MADE IN HEAVEN

The ideal solution for a garage with a side access is to have **Birkdale XL** single insulated door. Built using the same **aluminium profiles** as the **DXL** and infilled with **40mm insulated** panels.

Handle choices and locks are from the same choices as the **DXL** so you can be assured of a quality and secured product.







## BESPOKE GLAZING

modern or traditional  
we can make it work

We can offer a **variety of glazing styles**, with frames available in **multiple shapes** and sizes including **square, rectangular and circular**.

We give you complete freedom in arranging them, your door can be glazed from top to bottom, left to right or angled across.

Mixing them together can help you achieve interesting and stylish designs, making a real **architectural statement**.

**Glazing options** are available with a clear or obscure polycarbonate in-fill fitted with either a **stainless** brushed metal surround or a woodgrain embossed ABS frame, **(colour matched to the door)**. Optional **custom designed artwork** also available.

**Two types of cassettes** are available. Both stylish and high quality to match virtually any architectural style.







# move smart operator packed full of features...

**The Birkdale door operator is a high-quality garage door opener with several key features.**

One of the most notable features of this operator is its **ultra-quiet operation**, which ensures minimal disturbance to your household.

Additionally, the Birkdale sectional door operator is **WiFi compatible**, allowing you to control your garage door from your smartphone or another internet-connected device.

This operator's **effortless installation and programming** make it ideal for homeowners looking for a convenient, hassle-free garage door solution.

Our garage door opener is not just about convenience, it's also about security. Optional WiFi connectivity offers the easiest way to connect and control your garage door from the comfort of your home. Whether you're looking to check if the door is closed or open or need to grant access to someone, you can easily do it all through your smartphone.

With remote monitoring, you can keep an eye on your garage from anywhere, giving you a sense of security that your property is always secure.

The days of getting out of your car to open the garage door are over with our innovative garage door opener.

## EXTRAS



**USB WiFi DEVICE**  
You can remotely control and monitor your garage door using a smartphone.



**WIRELESS KEYPAD**  
Convenient and safe access to your garage without using a remote or key with four channels available.



**PHOTOCELL**  
Provide additional safety in the operation of your garage door.



**WiFi CAMERA**  
Monitor your garage anytime and anywhere.



**BATTERY BACKUP**  
Keep your garage door operating in case of a power cut.



**UNIVERSAL RECEIVER**  
Gives capacity to connect 400 remotes at four available channels.







see the complete range  
scan the code...

Garage Doors | Industrial Doors | Roller Shutters  
Awnings & Pergolas | Screens | Home Automation